



India Meteorological Department  
Earth System Science Organisation  
(Ministry of Earth Sciences)

**BULLETIN NO.: 10 (BAY OF BENGAL 01/2020)**

**TIME OF ISSUE: 1100 HOURS IST**

**DATED: 17.05.2020**

**FROM: INDIA METEOROLOGICAL DEPARTMENT (FAX NO. 24643965/24699216/24623220)**

**TO: CONTROL ROOM, NDM, MINISTRY OF HOME AFFAIRS (FAX.NO. 23093750)**

**CONTROL ROOM NDMA (FAX.NO. 26701729)**

**CABINET SECRETARIAT (FAX.NO.23012284, 23018638)**

**PS TO HON'BLE MINISTER FOR S & T AND EARTH SCIENCES (FAX NO.23316745)**

**SECRETARY, MOES, (FAX NO. 24629777)**

**H.Q. (INTEGRATED DEFENCE STAFF AND CDS) (FAX NO. 23005137/23005147)**

**DIRECTOR GENERAL, DOORDARSHAN (23385843)**

**DIRECTOR GENERAL, AIR (23421105, 23421219)**

**PIB MOES (FAX NO. 23389042)**

**UNI (FAX NO. 23355841)**

**D.G. NATIONAL DISASTER RESPONSE FORCE (NDRF) (FAX NO. 26105912, 2436 3260)**

**DIRECTOR, PUNCTUALITY, INDIAN RAILWAYS (FAX NO. 23388503)**

**CHIEF SECRETARY, ANDAMAN & NICOBAR ISLANDS (FAX NO. 03192- 232656)**

**CHIEF SECRETARY, WEST BENGAL (FAX NO. 033-22144328)**

**CHIEF SECRETARY, GOVT. OF ODISHA (FAX NO. 0674 -2536660)**

**CHIEF SECRETARY, ANDHRA PRADESH (FAX NO. 0863-2441029, 08645-246600)**

**CHIEF SECRETARY, TAMIL NADU (FAX NO. 044-25672304)**

**CHIEF SECRETARY, PUDUCHERRY (FAX NO. 0413-2337575, 2334145)**

**Sub: The Cyclonic Storm 'AMPHAN' (pronounced as UM-PUN) over Southeast Bay of Bengal and neighbourhood intensified into a Severe Cyclonic Storm over the same region. Cyclone Alert for West Bengal Coast and Cyclone watch for Odisha coast: Yellow Message.**

The Cyclonic Storm 'AMPHAN' (pronounced as **UM-PUN**) over Southeast Bay of Bengal and neighbourhood moved slowly northwestwards with a speed of 03 kmph during past 06 hours, intensified into a Severe Cyclonic Storm and lay centred over the same region at 0830 hrs IST of today, the 17<sup>th</sup> May, 2020 near latitude 11.4°N and longitude 86.0°E, about 990 km south of Paradip (Odisha), 1140 km south-southwest of Digha (West Bengal) and 1260 km south-southwest of Khepupara (Bangladesh). It is very likely to intensify further into a Very Severe Cyclonic Storm during next 12 hours. It is very likely to move nearly northwards slowly during next 24 hours and then re-curve north-northeastwards and move fast across northwest Bay of Bengal and cross West Bengal – Bangladesh coasts between Sagar Islands (West Bengal) and Hatiya Islands (Bangladesh) during the Afternoon / Evening of 20<sup>th</sup> May 2020 as a Very Severe Cyclonic Storm.

Forecast track and intensity are given in the following table:

Date/Time(IST)	Position (Lat. °N/ long. °E)	Maximum sustained surface wind speed (Kmph)	Category of cyclonic disturbance
17.05.20/0830	11.4/86.0	90-100 gusting to 110	Severe Cyclonic Storm
17.05.20/1130	11.7/85.9	95-105 gusting to 115	Severe Cyclonic Storm
17.05.20/1730	12.3/85.8	105-115 gusting to 125	Severe Cyclonic Storm
17.05.20/2330	13.1/85.9	115-125 gusting to 140	Very Severe Cyclonic Storm
18.05.20/0530	13.7/86.0	125-135 gusting to 150	Very Severe Cyclonic Storm
18.05.20/1730	14.8/86.2	145-155 gusting to 170	Very Severe Cyclonic Storm
19.05.20/0530	16.1/86.6	160-170 gusting to 190	Extremely Severe Cyclonic Storm
19.05.20/1730	17.6/87.2	170-180 gusting to 200	Extremely Severe Cyclonic Storm
20.05.20/0530	19.6/88.0	170-180 gusting to 200	Extremely Severe Cyclonic Storm
20.05.20/1730	21.7/89.0	155-165 gusting to 180	Very Severe Cyclonic Storm
21.05.20/0530	23.5/89.7	95-105 gusting to 115	Severe Cyclonic Storm
21.05.20/1730	25.3/90.2	40-50 gusting to 60	Depression

**Spatial rainfall distribution: Isolated: <25%, A few: 26-50%, Many: 51-75%, Most: 76-100%**

**Rainfall amount (mm): Heavy rain: 64.5 – 115.5, Very heavy rain: 115.6 – 204.4, Extremely heavy rain: 204.5 or more.**

## Warnings:

### (i) Rainfall (over Andaman & Nicobar Islands):

- Light to moderate rainfall at most places is very likely over Andaman & Nicobar Islands during next 24 hours.

### • Rainfall (over Odisha & Gangetic West Bengal)

Coastal Odisha is likely to experience light to moderate rainfall at many places with heavy falls at isolated places from 18<sup>th</sup> May evening. Rainfall at most places with heavy to very heavy rainfall at a few places on 19<sup>th</sup> May and isolated heavy rainfall over north coastal Odisha on 20<sup>th</sup> May 2020. Coastal districts of Gangetic West Bengal are likely to experience light to moderate rainfall at many places with heavy falls at isolated places on 19<sup>th</sup> May. Rainfall at most places with heavy to very heavy falls at a few places & extremely heavy falls at isolated places likely over coastal districts of West Bengal on 20<sup>th</sup> May.

### (ii) Wind warning

- Squally wind speed reaching 45 to 55 kmph gusting to 65 kmph is likely to commence along and off south Odisha coast from 18<sup>th</sup> evening, extend to along & off north Odisha coast from 19<sup>th</sup> morning and along and off West Bengal coast from 19<sup>th</sup> afternoon. The wind speed will gradually increase becoming gale wind speed reaching 75 to 85 kmph gusting to 95 kmph from 20<sup>th</sup> morning along and off north Odisha and West Bengal coasts. It will gradually increase thereafter along & off West Bengal coast.
- Squally wind speed reaching 45 to 55 kmph gusting to 65 kmph is likely over Andaman Sea during next 24 hours.
- Squally wind speed reaching 80 to 90 kmph gusting to 100 kmph is prevailing over southeast and adjoining southwest Bay of Bengal. It is likely to increase becoming 125-135 gusting to 150 kmph over southern parts of central Bay of Bengal by 18<sup>th</sup> morning, 160-170 gusting to 190 kmph over northern parts of central Bay of Bengal and adjoining North Bay of Bengal on 19<sup>th</sup>, and 155-165 gusting to 180 kmph over north Bay of Bengal during 20<sup>th</sup> May.

### (iii) Sea condition

Sea condition will very high over southwest and adjoining central Bay of Bengal during next 24 hours It will become phenomenal over southern parts of central Bay of Bengal from tonight, over northern parts of central Bay of Bengal and adjoining north Bay of Bengal on 19<sup>th</sup> May and over north Bay of Bengal on 20<sup>th</sup> May 2020.

### (iv) Fishermen Warning

- The fishermen are advised not to venture into south Bay of Bengal during next 24 hours, to central Bay of Bengal during 17<sup>th</sup> to 18<sup>th</sup> May and North Bay of Bengal during 18<sup>th</sup> to 20<sup>th</sup> May 2020.
- Also, fishermen are advised not to venture into north Bay of Bengal along and off North Odisha, West Bengal and adjoining Bangladesh coasts during 18<sup>th</sup> to 20<sup>th</sup> May 2020.

Kindly visit [www.rsmcnewdelhi.imd.gov.in](http://www.rsmcnewdelhi.imd.gov.in) and [www.mausam.imd.gov.in](http://www.mausam.imd.gov.in) for updates on the system.

**Next Bulletin will be issued at 1430 hours IST of 17<sup>th</sup> May, 2020.**

**(Sunitha Devi)**  
**Scientist-F, RSMC, New Delhi**

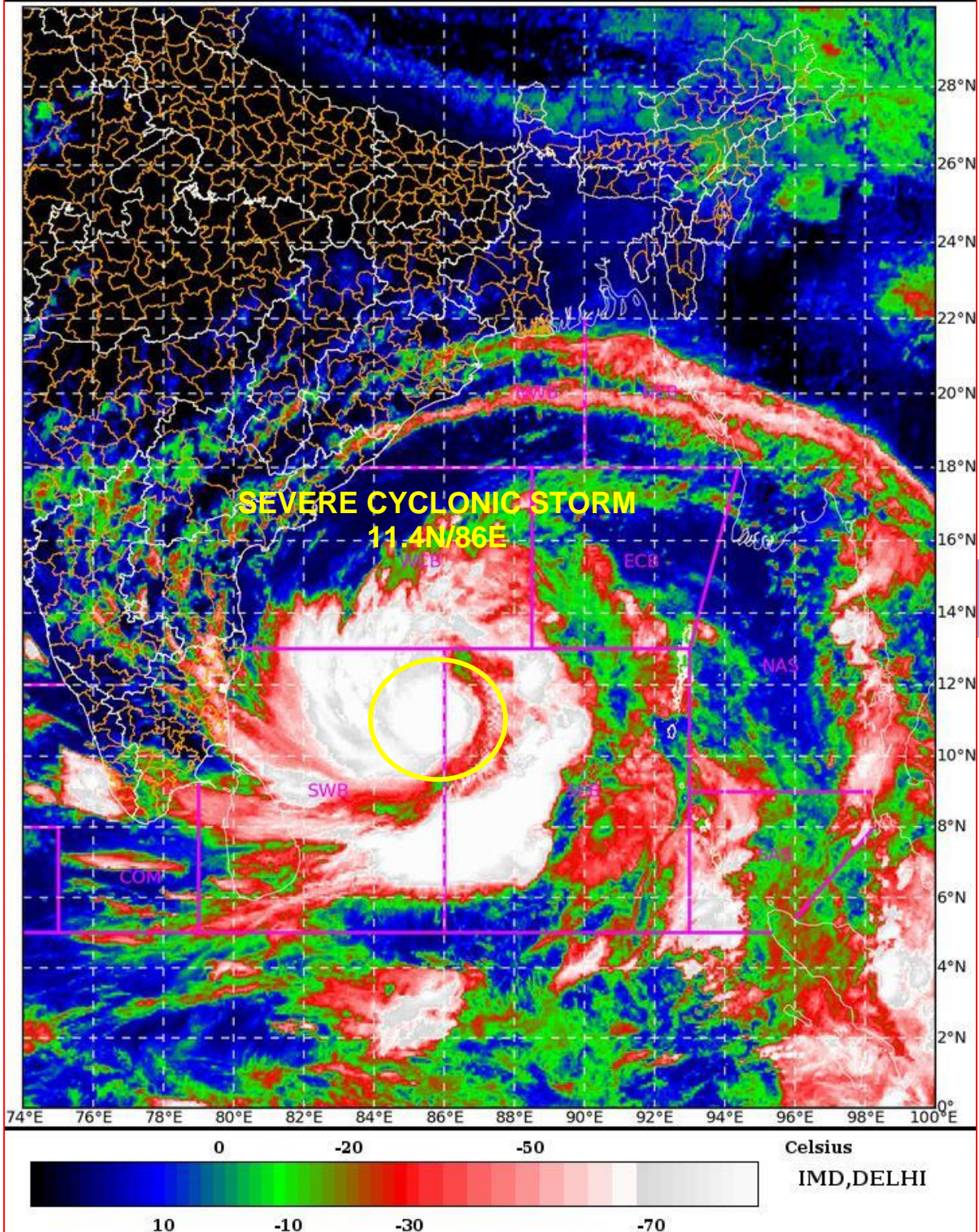
**Copy to: CRS, Pune/ ACWC Chennai/ ACWC Kolkata/CWC Bhubaneswar/ /CWC Visakhapatnam**

Spatial rainfall distribution: Isolated: <25%, A few: 26-50%, Many: 51-75%, Most: 76-100%  
Rainfall amount (mm): Heavy rain: 64.5 – 115.5, Very heavy rain: 115.6 – 204.4, Extremely heavy rain: 204.5 or more.

SAT : INSAT-3D IMG 17-05-2020/(0400 to 0427) GMT

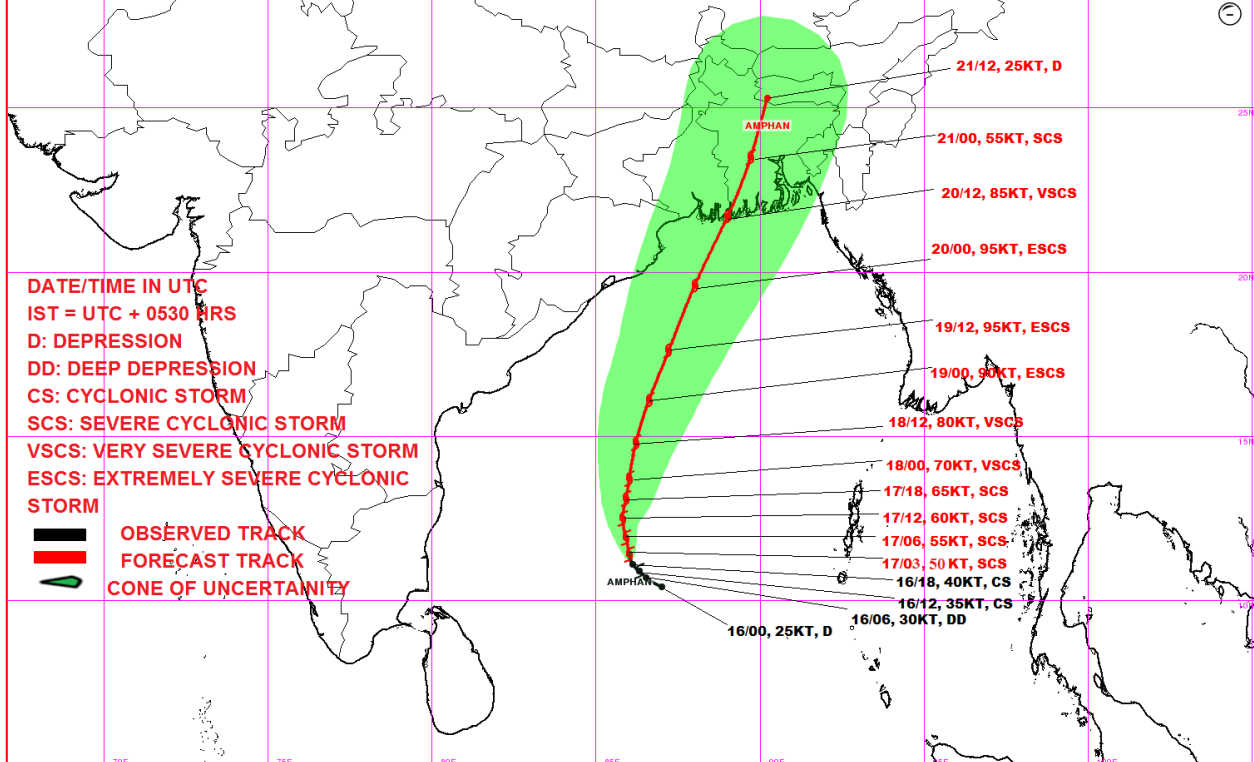
IMG\_TIR1\_TEMP 10.8 um 17-05-2020/(0930 to 0957) IST

L1C Mercator

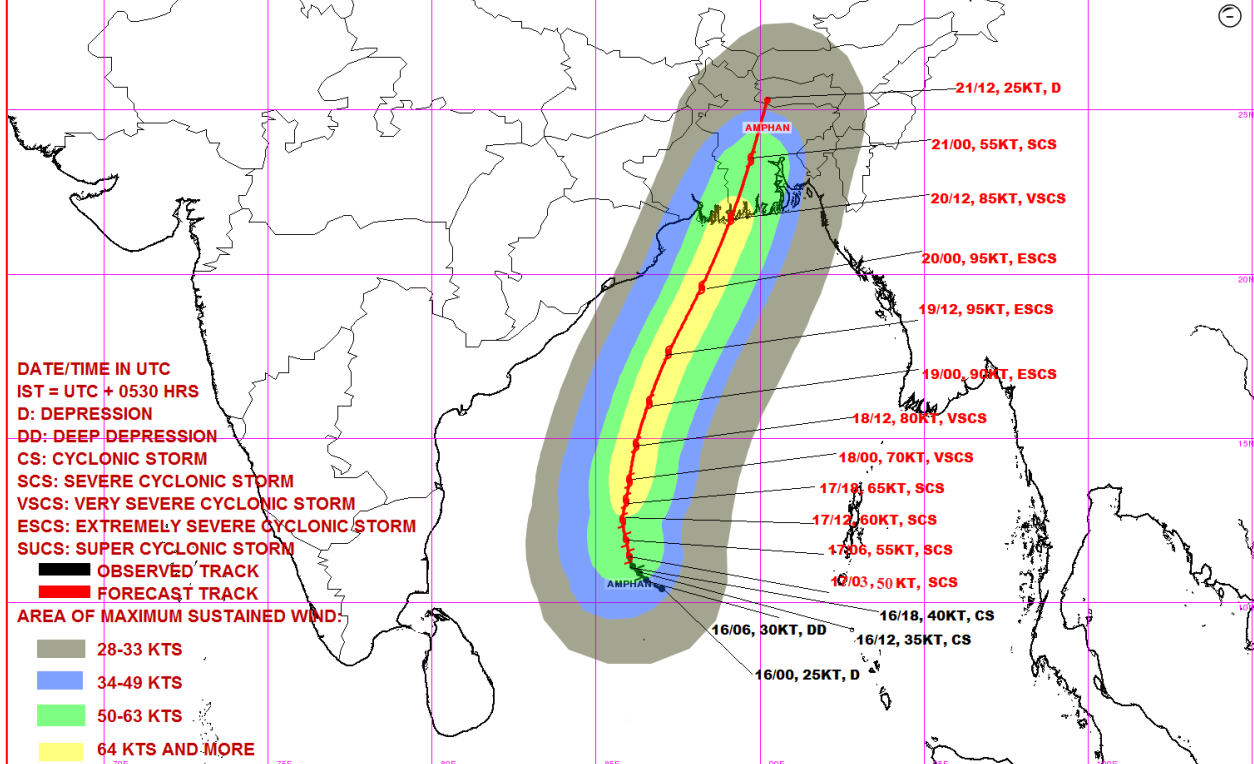


Spatial rainfall distribution: Isolated: <25%, A few: 26-50%, Many: 51-75%, Most: 76-100%  
Rainfall amount (mm): Heavy rain: 64.5 – 115.5, Very heavy rain: 115.6 – 204.4, Extremely heavy rain: 204.5 or more.

**OBSERVED & FORECAST TRACK ALONGWITH CONE OF UNCERTAINTY OF SEVERE CYCLONIC STORM, AMPHAN OVER SOUTHEAST BAY OF BENGAL BASED ON 0300 UTC OF 17<sup>TH</sup> MAY, 2020**



**OBSERVED & FORECAST TRACK ALONGWITH QUADRANT WIND DISTRIBUTION OF SEVERE CYCLONIC STORM, AMPHAN OVER SOUTHEAST BAY OF BENGAL BASED ON 0300 UTC OF 17<sup>TH</sup> MAY, 2020**



**Spatial rainfall distribution: Isolated: <25%, A few: 26-50%, Many: 51-75%, Most: 76-100%**  
**Rainfall amount (mm): Heavy rain: 64.5 – 115.5, Very heavy rain: 115.6 – 204.4, Extremely heavy rain: 204.5 or more.**